

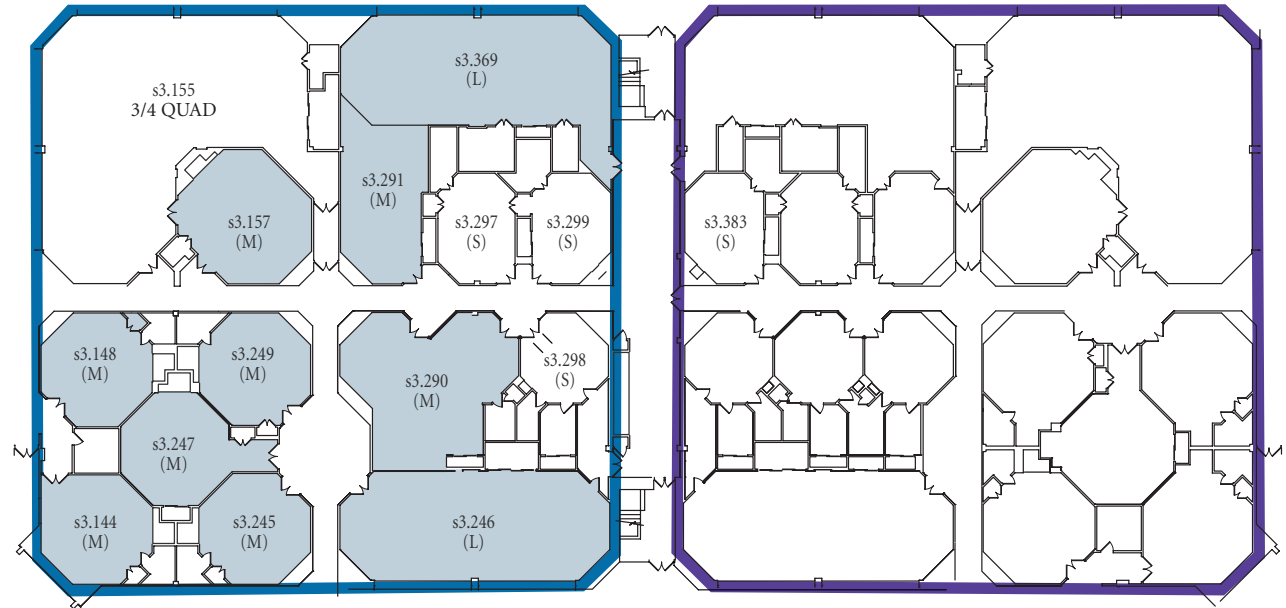
# SOUTH BUILDING

877.363.3108  
sales@conferencecenter.com  
conferencecenter.com

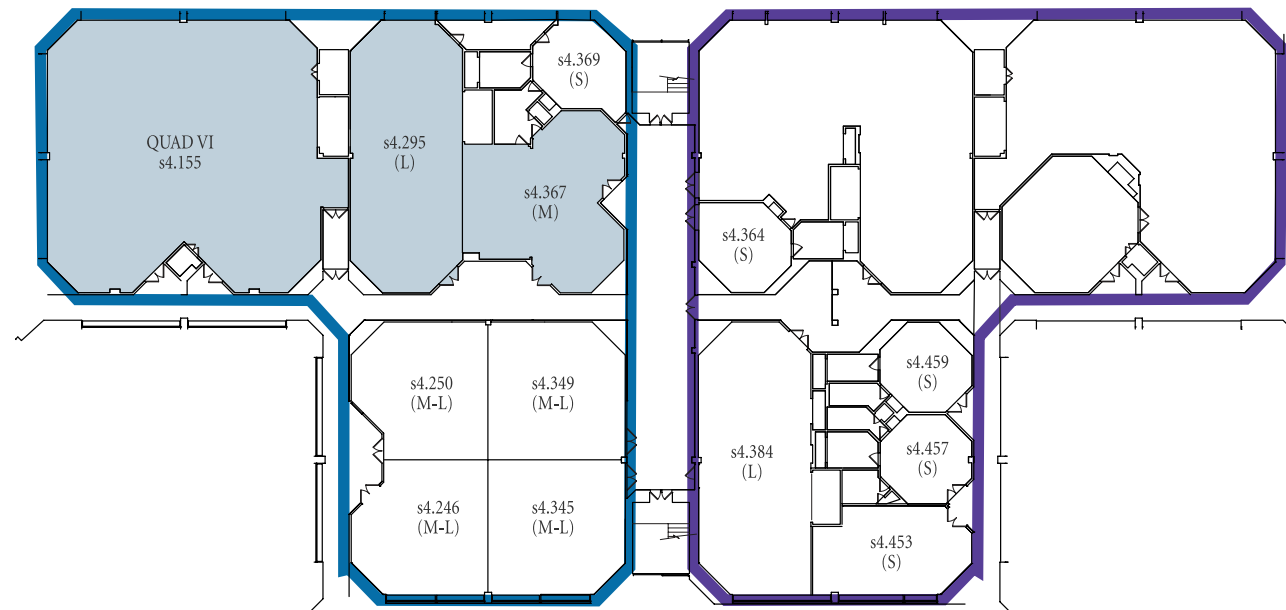
18980 Upper Belmont Place  
Leesburg, VA 20176



## THIRD FLOOR



## FOURTH FLOOR



# SOUTH BUILDING

877.363.3108  
 sales@conferencecenter.com  
 conferencecenter.com

18980 Upper Belmont Place  
 Leesburg, VA 20176



## Room Capacities



Total Sq Ft

Floor

Room Number

Ceiling Ht

Classroom

Theater

Banquet 10

Reception

Conference

U-Shape

H-Square

Quad VI	4000	4	s4.155	10 ft.	150	325	250	400	N/A	N/A	N/A
Quad-Three-Quarter	3000	3	s3.155	10 ft.	120	225	200	300	N/A	50	64
Large Classroom (L)	1600-1800	3 4	s3.246, s3.369 s4.295, s4.384	10 ft.	60	120	90	150-200	N/A	36	42
Medium-Large Classroom (M-L)	1000	4	s4.246, s4.250, s4.345, s4.349	10 ft.	40	60	50	100	N/A	16	20
Medium Classroom (M)	600-800	3 4	s3.144, s3.148, s3.157, s3.245, s3.247, s3.249, s3.290, s3.291 s4.367	10 ft.	20-30	40-60	30-50	50-80	16-20	16	20
Small Classroom (S)	200-400	3 4	s3.297, s3.298, s3.299, s3.383 s4.364, s4.369, s4.453, s4.457, s4.459	10 ft.	10	20	20	20-25	6-8	8	N/A

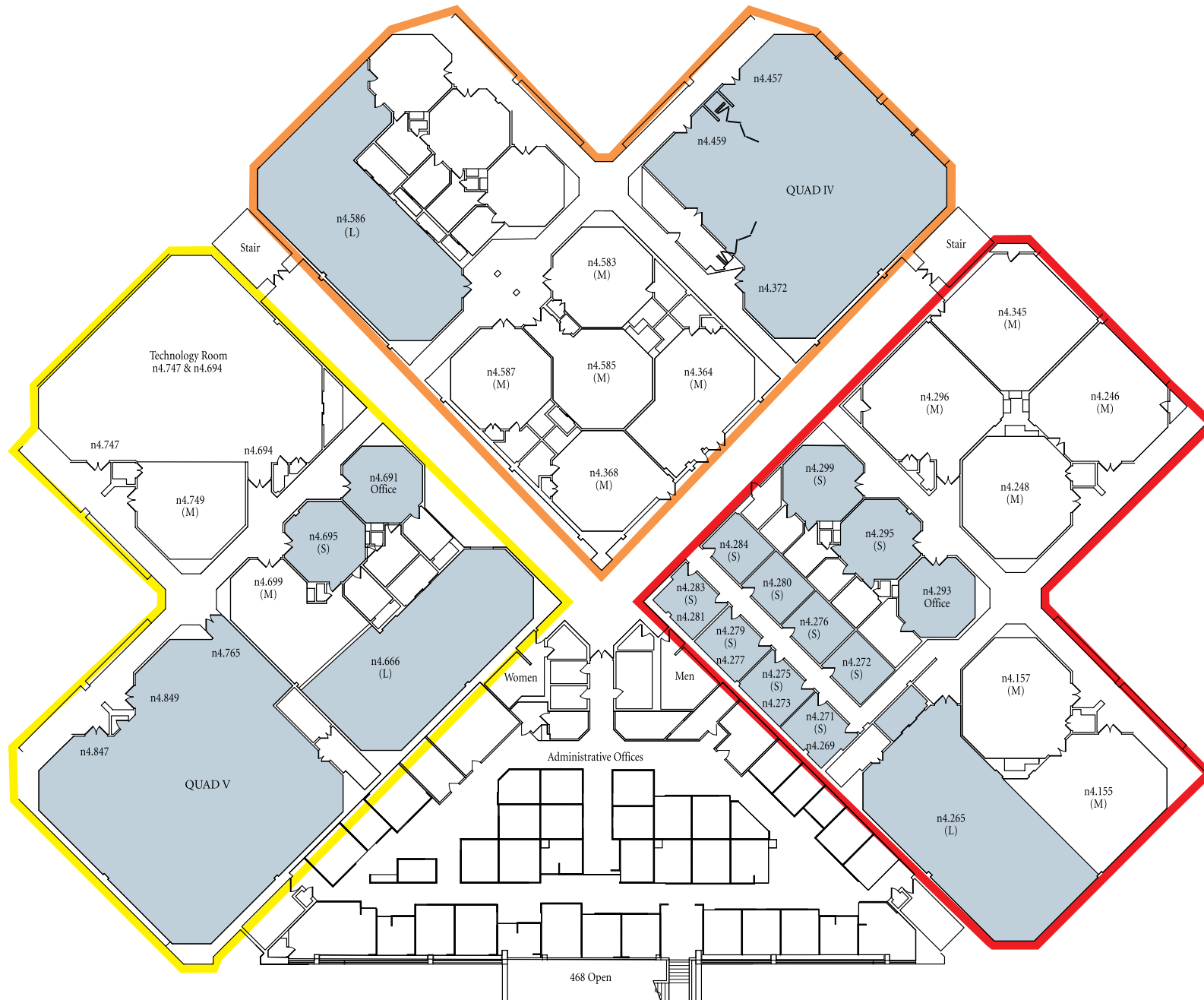


# NORTH BUILDING | FOURTH FLOOR

877.363.3108  
sales@conferencecenter.com  
conferencecenter.com

18980 Upper Belmont Place  
Leesburg, VA 20176

THE  
NATIONAL  
CONFERENCE  
CENTER®



# NORTH BUILDING

877.363.3108  
 sales@conferencecenter.com  
 conferencecenter.com

18980 Upper Belmont Place  
 Leesburg, VA 20176



## Room Capacities

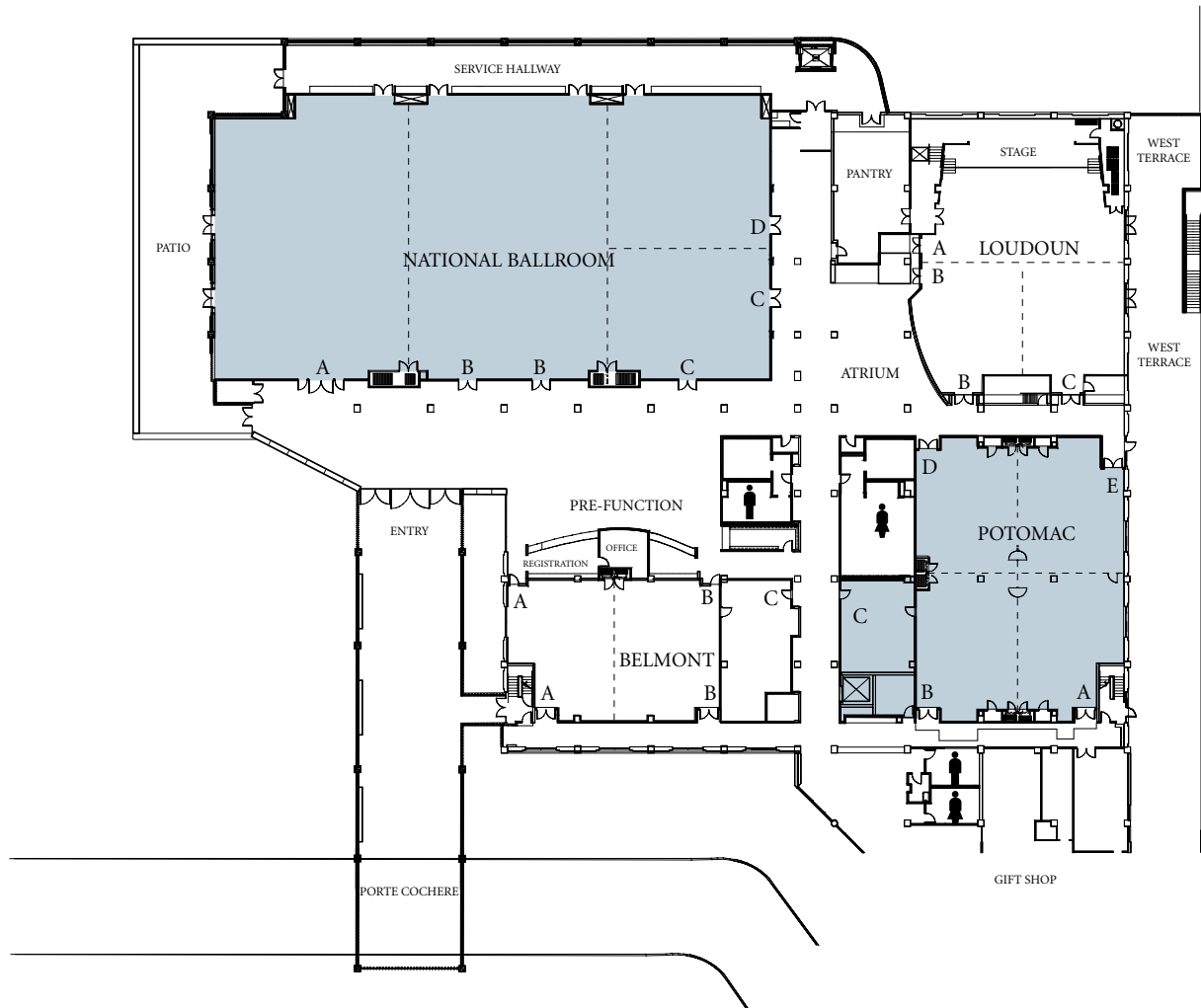
	Total Sq Ft	Floor	Room Number	Ceiling Ht	Classroom	Theater	Banquet 10	Reception	Conference	U-Shape	H-Square
Conference Hall	8400	3	n3.270/n3.670/n3.790	10 ft.	400	900	500	900	N/A	N/A	N/A
Hall I	2700	3	n3.270	10 ft.	100	250	120	284	32	26	40
Hall II	3000	3	n3.670	10 ft.	115	275	150	316	40	40	48
Hall III	2700	3	n3.790	10 ft.	100	250	120	284	22	26	40
Quad	4000			10 ft.	150	325	250	400	N/A	N/A	N/A
I		3	n3.262/n3.264/n3.365/n3.367								
II		3	n3.246/n3.248/n3.296/n3.345								
III		3	n3.155/n3.263/n3.265								
IV		4	n4.372/n4.457/n4.459								
V		4	n4.765/n4.847/n4.849								
Quad-Half	2000		Subset of Quad	10 ft.	72	150	110	210	N/A	34	47
Quad-Quarter	1000		Subset of Quad	10 ft.	40	60	50	100	20	24	30
Forum	800-900	3	n3.364, n3.375, n3.585, n3.665, n3.749	10 ft.	N/A	N/A	N/A	N/A	N/A	40 UU	N/A
Large Classroom (L)	1600-2400	3	n3.372, n3.555, n3.586, n3.694, n3.770, n3.845	10 ft.	60-80	140	110	180-230	N/A	42	47
		4	n4.265, n4.586, n4.666								
Medium Classroom (M)	600-800	3	n3.148, n3.247, n3.249, n3.740, n3.744, n3.747, n3.846, n3.848, n3.850	10 ft.	20-30	40-60	40-60	50-80	16-20	16	20
		4	n4.155, n4.157, n4.246, n4.248, n4.296, n4.345, n4.364, n4.368, n4.583, n4.585, n4.587, n4.699, n4.749								
Small Classroom (S)	200-400	3	n3.455, n3.456, n3.457, n3.459, n3.460, n3.554, n3.556, n3.695, n3.781, n3.783, n3.785, n3.786, n3.787	10 ft.	10-12	20	16	20-25	6-8	8	N/A
		4	n4.269/71, n4.272, n4.273/75, n4.276, n4.277/79, n4.280, n4.281/83, n4.284, n4.295, n4.299, n4.695								
Boardroom	560-600	3	n3.144, n3.245	10 ft.	N/A	N/A	N/A	N/A	12-16	N/A	N/A
Video Conference	517	3	n3.699	10 ft.	N/A	N/A	N/A	N/A	7	N/A	N/A
Technology Room	2970	4	n4.694/4.747	10 ft.	65	125	200	300	N/A	40	50
Office	400	3	n3.454, n3.558, n3.691	10 ft.	N/A	N/A	N/A	N/A	6	N/A	N/A
		4	n4.293, n4.691								

Additional meeting space is available.

# WEST BUILDING

877.363.3108  
sales@conferencecenter.com  
conferencecenter.com

18980 Upper Belmont Place  
Leesburg, VA 20176













# WEST BUILDING

877.363.3108  
 sales@conferencecenter.com  
 conferencecenter.com

18980 Upper Belmont Place  
 Leesburg, VA 20176



Room Capacities	 Total Sq Ft	 Ceiling Height	 66" Rounds 10 per	 Theater Style	 Reception (Standing)	 Classroom 24"	 Conference	 U-Shape	 H-Square	 Trade Show 8x10
Pre-Function	5500	N/A	N/A	N/A	580	N/A	N/A	N/A	N/A	N/A
<b>NATIONAL BALLROOM</b>										
(A/B/C/D)	16552	18 ft.	1150	1800	1735	900	N/A	N/A	N/A	100
A	5722	18 ft.	350	600	570	250	N/A	N/A	N/A	34
B	5915	18 ft.	370	700	620	300	N/A	N/A	N/A	36
A/B	11637	18 ft.	770	1350	1200	600	N/A	N/A	N/A	70
B/C/D	10830	18 ft.	700	1200	1105	550	N/A	N/A	N/A	60
C	2457	18 ft.	120	250	250	112	28	38	52	15
D	2458	18 ft.	120	250	250	112	28	38	52	15
C/D	4915	18 ft.	280	500	516	260	N/A	N/A	N/A	30
<b>LOUDOUN (A/B/C)</b>	4283	18 ft.	320	525	420	200	N/A	N/A	N/A	25
A	2000	18 ft.	100	200	205	80	N/A	N/A	52	N/A
B	1000	18 ft.	80	105	105	45	N/A	18	24	N/A
B/C	2000	18 ft.	120	200	205	100	N/A	N/A	52	N/A
C	1000	18 ft.	70	90	105	50	N/A	18	24	N/A
<b>POTOMAC (A/B/D/E)</b>	5982	10 ft.	370	650	600	250	N/A	N/A	N/A	36
A	1495	10 ft.	80	150	150	50	24	32	40	9
B	1495	10 ft.	80	150	150	50	24	32	40	9
A/B	2991	10 ft.	170	325	300	140	N/A	N/A	N/A	18
D	1495	10 ft.	80	150	150	50	24	32	40	9
E	1495	10 ft.	80	150	150	50	24	32	40	9
D/E	2991	10 ft.	170	325	300	110	N/A	N/A	N/A	18
C	709	10 ft.	40	60	68	30	16	18	22	N/A
<b>BELMONT (A/B)</b>	2990	10 ft.	190	288	300	150	N/A	N/A	N/A	18
A	1495	10 ft.	80	130	150	48	N/A	32	40	9
B	1495	10 ft.	90	130	150	60	N/A	32	40	9
C	973	10 ft.	50	75	95	30	20	20	24	N/A